

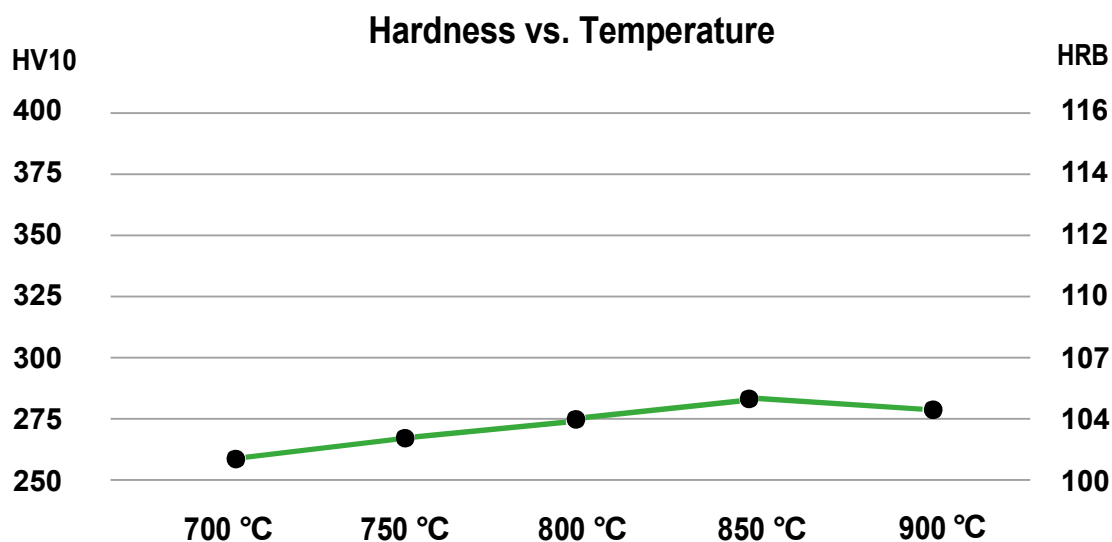
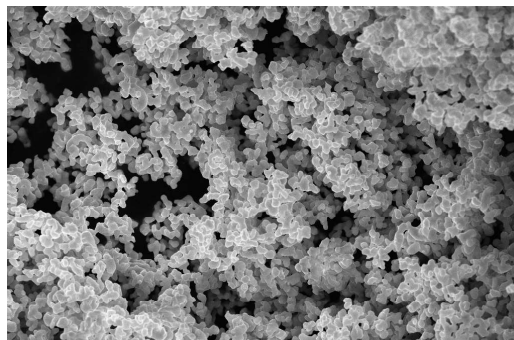
# SHU POWDERS

# CoMat SP H 400#

Shu Cobalt Series

Particle Size FSSS	[ $\mu\text{m}$ ]	3,50 +/- 0,50
Apparent Density	[ $\text{g}/\text{cm}^3$ ]	1,40 - 2,00
Oxygen Content	[%]	0,3 - 0,5
Co Content	[%]	$\geq 99,85 - 99,99$

Hardness: HB = 0,95 HV



Tolerance: +/- 10 HV10

### Sintering Data (recommended):

Cold Pressure	[ $\text{kN}/\text{cm}^2$ ]	35 - 60
Hot Pressure (pre)	[ $\text{kN}/\text{cm}^2$ ]	1,5 - 2,0
Hot Pressure (main)	[ $\text{kN}/\text{cm}^2$ ]	3,0 - 4,0

Pressure Change Temperature	[°C]	800
Sintering Temperature	[°C]	850

Sintering Time	[min]	3
Cooling Time	[min]	3

**Powder granulation on request**

**Sole European Distributor for Shu Cobalt Powders into Diamond Tooling industry**

K-mat GmbH Kieler Str. 103-107 D-25474 Hamburg-Bönningstedt  
Tel.: +49 (40)-555 05 390 Fax.: +49 (40)-555 05 399  
info@k-mat.de www.k-mat.de

