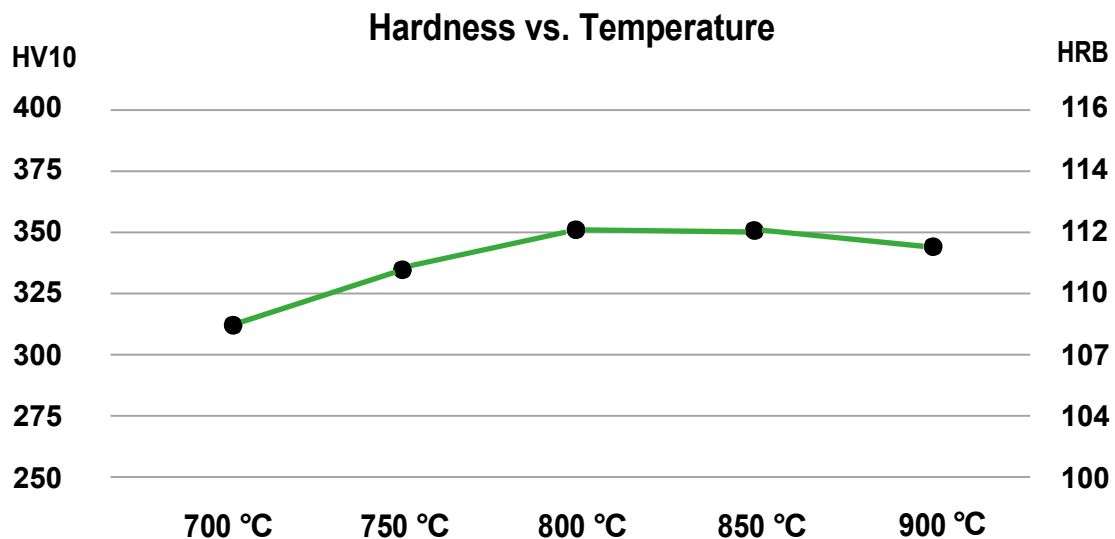
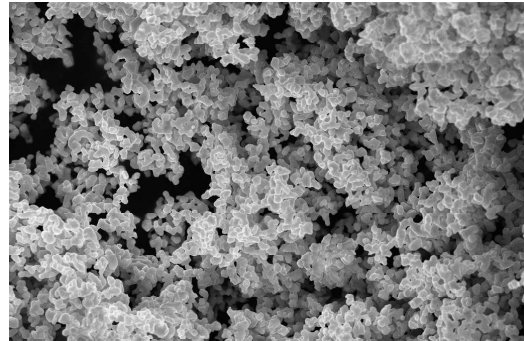


SHU POWDERS

CoMat SP UF

Shu Cobalt Series

Particle Size FSSS	[μm]	0,9 +/- 0,15
Apparent Density	[g/cm^3]	0,6 - 1,25
Oxygen Content	[%]	0,5 - 0,6
Co Content	[%]	$\geq 99,85 - 99,99$
Hardness:	HB =	0,95 HV



Tolerance: +/- 10 HV10

Sintering Data (recommended):

Cold Pressure	[kN/cm^2]	35 - 60
Hot Pressure (pre)	[kN/cm^2]	1,5 - 2,0
Hot Pressure (main)	[kN/cm^2]	3,0 - 4,0
Pressure Change Temperature	[°C]	750
Sintering Temperature	[°C]	800
Sintering Time	[min]	3
Cooling Time	[min]	3

Powder granulation on request

Sole European Distributor for Shu Cobalt Powders into Diamond Tooling industry

K-mat GmbH Kieler Str. 103-107 D-25474 Hamburg-Bönningstedt
Tel.: +49 (40)-555 05 390 Fax.: +49 (40)-555 05 399
info@k-mat.de www.k-mat.de

